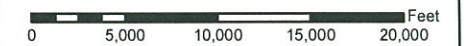
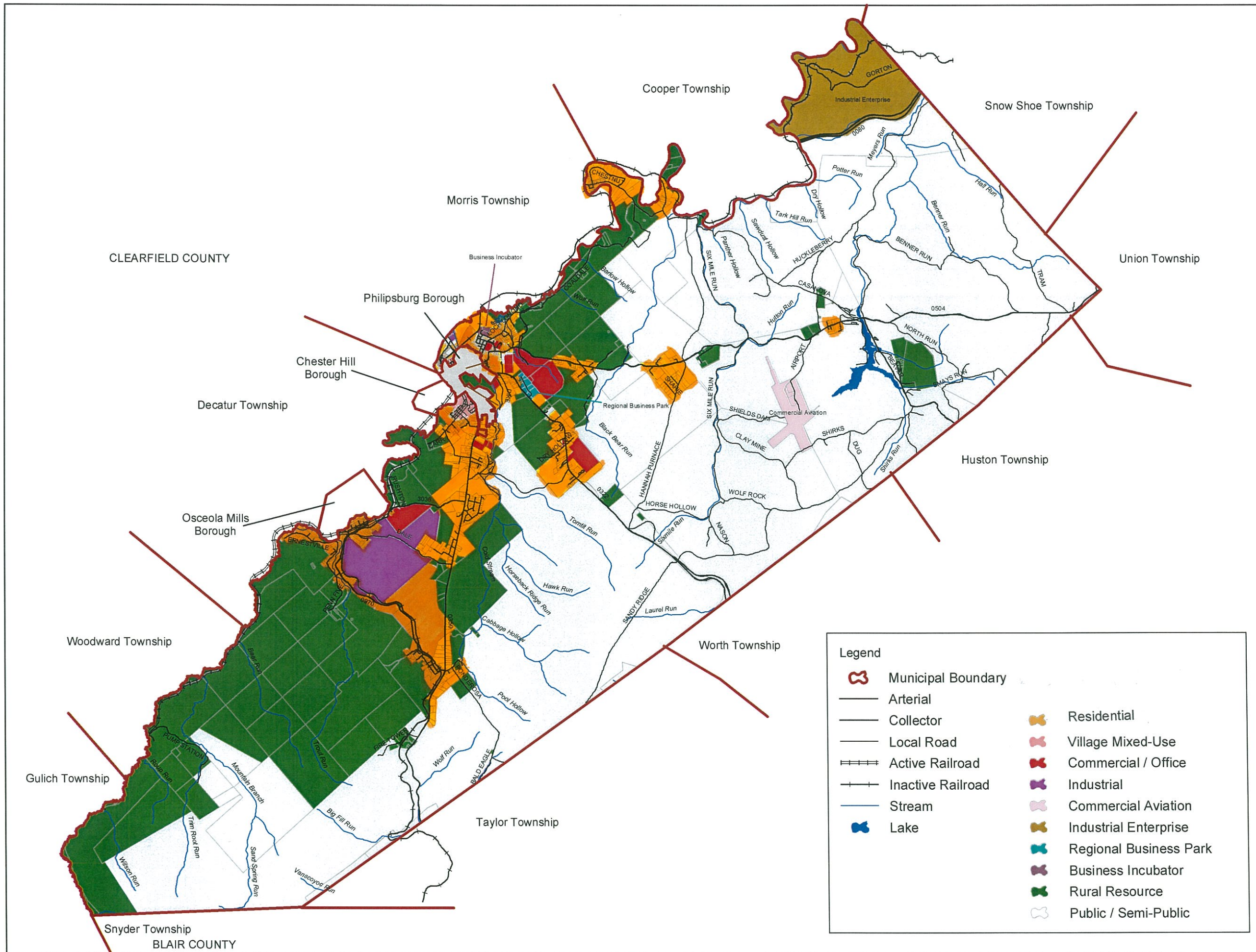


RUSH TOWNSHIP
CENTRE COUNTY, PA
OFFICIAL ZONING MAP
NOVEMBER 27, 2013



ALDER RUN ENGINEERING
107 COAL STREET
OSCEOLA MILLS, Pennsylvania 16666
PHONE: (814) 339-6998
FAX: (814) 339-6266



Legend

	Municipal Boundary		Residential
	Arterial		Village Mixed-Use
	Collector		Commercial / Office
	Local Road		Industrial
	Active Railroad		Commercial Aviation
	Inactive Railroad		Industrial Enterprise
	Stream		Regional Business Park
	Lake		Business Incubator
			Rural Resource
			Public / Semi-Public